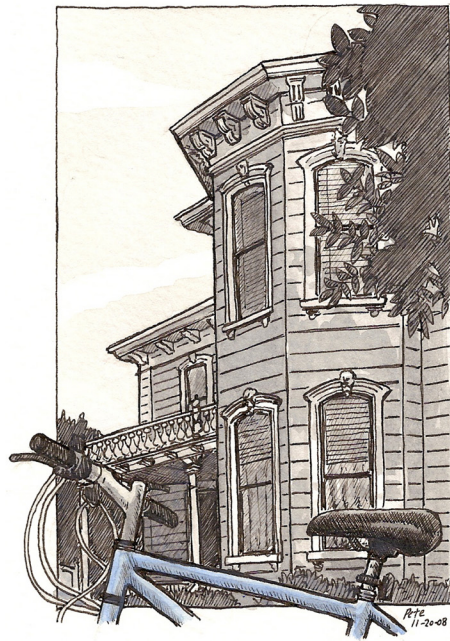


IN 2017, THE CITY OF DAVIS

celebrates its centenary, but of course Davis has been around for a bit longer than that.



Exploring Davis with a sketchbook is a good way to learn more about our city and its history through personal observation. Exploring on foot you can stop and take in each detail, while exploring by bike is a bit faster and allows you to get further afield, and after all, Davis is a cyclist's city. Learning more about the history of Davis you can start to understand why it exists, why we have all been drawn here.

All of the buildings and sites listed on the map overleaf are 100 years old or more. The City of Davis includes them in their 'Davis Historic Pedestrian and Bike Tour', which can be found on their website at: <http://cityofdavis.org/>. Not all pre-1917 buildings are included - see which others you can find!

*Map, drawings and text are (c) Pete Scully.
All rights reserved.*

SKETCHCRAWL INFORMATION

**DATE: SATURDAY
MARCH 25, 2017**

**START: 10:30AM,
FINISH: 3:30PM,**

**AT DRESBACH-HUNT-
BOYER MANSION,
2ND/E ST**

Join us today for a sketchcrawl in Davis! Sketch solo or in groups as you prefer. We will meet up at the end to check out each other's sketchbooks, and see how much of historic Davis we have drawn together. Draw and explore!

This sketchcrawl is free and open to *anyone* who likes to sketch! All you need is something to draw with and something to draw on.



This event is organized Pete Scully, Urban Sketchers correspondent for Davis, who has organized 'Let's Draw Davis' sketchcrawls since 2010. Find out about future (and past) sketchcrawls at:

letsdrawdavis.wordpress.com
For more information, please email Pete at pscully@ucdavis.edu

RAIN: If it rains...keep on sketching!

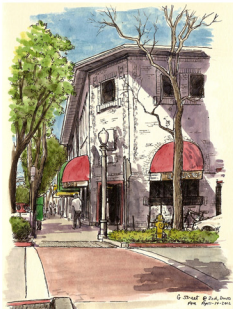
LET'S DRAW DAVIS

It was originally 'Davisville', named after early settlers, Jerome and Mary Davis. After the Davises sold 7,000 acres of land to the California Pacific Railroad, a triangular rail junction was built here, around which grew the town of Davisville, with around 400 residents by 1870. In these years, such homes such as the Dresbach Hunt Boyer Mansion were constructed (William Frederick Dresbach, who built the house, is also said to have been the one who named Davisville after Jerome Davis). The Davisville Enterprise shortened the name to 'Davis' in 1906, and the local post office soon started doing the same. Davis was an agricultural town serving the local farmers. In 1908, the first students enrolled at the new University Farm, administered by UC Berkeley's College of Agriculture, laying the foundation for UC Davis. The Lincoln Highway, which was begun in 1913 and ran from New York to San Francisco, also passed through Davis. Around this time, many new homes were built in what is now the Old East downtown, such as the Schmeiser House, home of local pioneer Theodore Schmeiser who organized the town's first water company. Around this time, in 1913, the Bowers Addition - now Old North Davis - was laid out. In 1916, the Davis Arch (now removed) was built across 2nd Street at the corner of G Street, on the route from the station to the University Farm. Also in that year a devastating fire in Davis, spurred residents to call for a more formal organization of local civic services.

The **City of Davis** was formally incorporated on **March 28, 1917**. Let's say 'Happy Birthday' to Davis by drawing it!

LET'S DRAW DAVIS!

There are many buildings and places that have been here for a century or more - here are just a few of them. Some aren't even in their original location. See if you can find (and sketch) more!



(X) Anderson Bank Building, 203 G St - 1914



(D) First Presbyterian Manse, 619 4th St - 1884



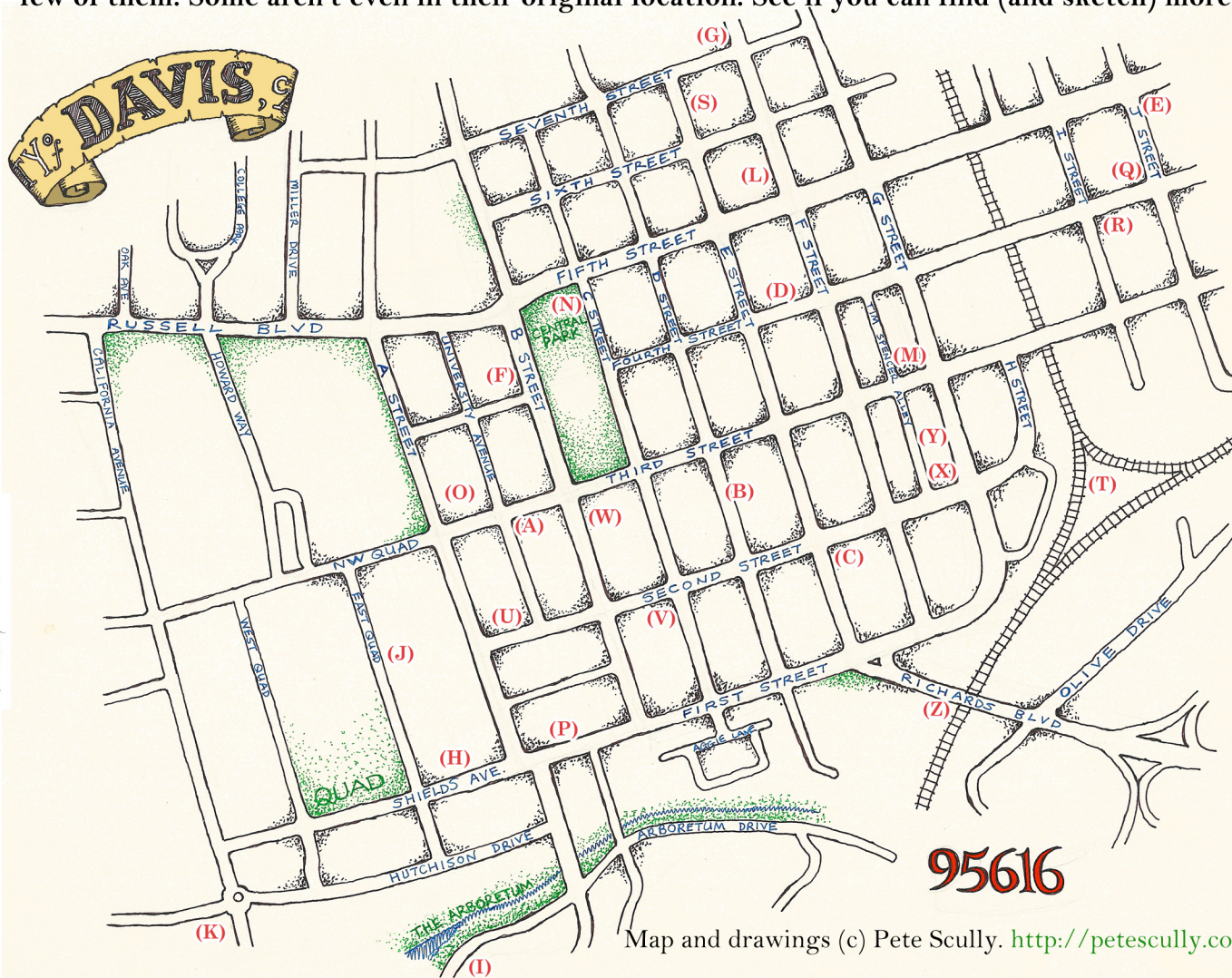
(A) Eggleston Home, 232 3rd St - 1870



(J) North Hall, UC Davis Quad - 1908



(I) Wyatt Pavilion Theatre, Arboretum Drive - 1907



Map and drawings (c) Pete Scully. <http://petescully.com>

- (A) Eggleston Home, 232 3rd St - 1870
- (B) 216-222 D St - 1870
- (C) Dresbach-Hunt-Boyer Mansion, 604 2nd St - 1875
- (D) First Presbyterian Manse, 619 4th St - 1884
- (E) Tufts-Longview Home, 434 J St - 1890
- (F) McDonald House, 337 B St - 1894
- (G) Anderson-Hamel Home, 623 7th St - 1903
- (H) University House, UC Davis Quad - 1907
- (I) Wyatt Pavilion Theatre, Arboretum Drive - 1907
- (J) North Hall & South Hall, UC Davis Quad - 1908
- (K) The Silo, Hutchison Dr, UC Davis - 1908
- (L) The Bentley House, 513 F St - 1910
- (M) Bank of Yolo, 301 G St - 1910

- (N) Old Davis Library, 445 C St - 1911
- (O) Grieve-Asbill Home, 310 A St - 1911
- (P) AJ Plant Home, 221 1st St - 1911
- (Q) McBride Home - 1912
- (R) Schmeiser Home, 334 I St - 1913
- (S) Liggett Home, 616 E St - 1913
- (T) Southern Pacific Railroad Station, H & 2nd St - 1913
- (U) Barovetto Home & Tank House, 209 2nd St - 1913
- (V) Clancy House, 137 C St - 1913
- (W) Jacobsen-Wilson House, 232 B St - 1914
- (X) Anderson Bank Building, 203 G St - 1914
- (Y) Masonic Lodge, 221-225 G St - 1917
- (Z) Davis Subway/Richards Underpass - 1917



(T) Southern Pacific Railroad Station, H & 2nd St - 1913



(N) Old Davis Library (now Hattley Weber Museum), 445 C St - 1911



(C) Dresbach-Hunt-Boyer Mansion, E & 2nd St - 1875



(B) 216-222 D St (now Cloud Forest Cafe) - 1870



(U) Barovetto Home & Tank House, 209 2nd St - 1913

sources: City of Davis website (cityofdavis.org), UC Davis website (ucdavis.edu), Davis Wiki (https://localwiki.org/davis/Historic_Places)